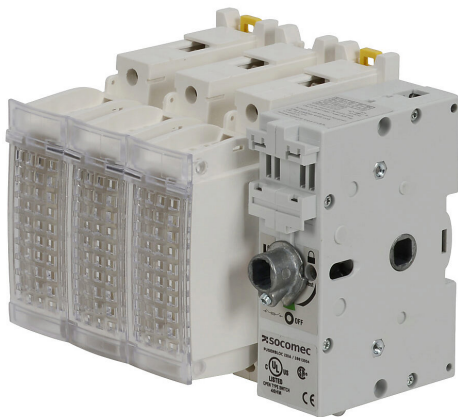


38613004 Cut Sheet



Socomec FUSERBLOC series rotary disconnect switch, fusible, Class J, load break capable, 3-pole, 600 VAC/250 VDC, 30A, 200kA SCCR, DIN rail or panel mount, UL 98 rated, front or side operated, accepts 10 x 10mm size shaft.

For complete product information, please see this item on our store at the following link:



<https://www.automationdirect.com/pn/38613004>

Technical Specifications

| | |
|--------------------|-------------------|
| Brand | Socomec |
| Item | Disconnect switch |
| Series | FUSERBLOC |
| Fuse Class | Class J |
| Fusible | Yes |
| Load Break Capable | Yes |
| Number of Poles | 3 |
| Voltage Rating | 600 VAC/250 VDC |

| | |
|------------------------|--------------------------------------|
| Amperage Rating | 30A |
| SCCR Rating | 200kA SCCR |
| Mounting | DIN rail or panel |
| UL Rating | UL 98 rated |
| Configuration | Front or side operated |
| Shaft Size | Accepts 10 x 10mm size shaft |
| Handle Type | Rotary |
| Additional Information | Purchase fuses and handle separately |

Agency Approvals

| | |
|----------------------|--|
| UL Listed File # | E201138 |
| UL Recognized File # | None |
| UL Hazardous File # | None |
| CE | View CE declarations |
| CSA File # | 112964 |
| RoHS Status | Yes (See CE Doc) |
| EU REACH | View EU REACH document |

Dimensional Drawings



2D Drawing PDF Link:
<https://cdn.automationdirect.com/static/drawings/38613004.pdf>
See store item page for other formats.