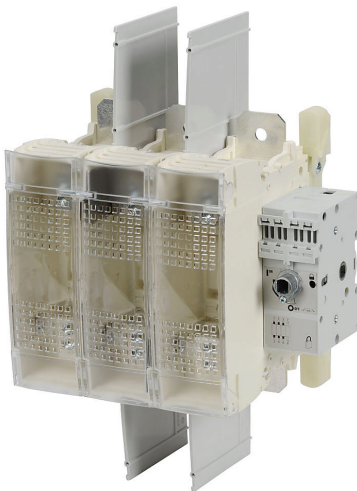


38513038 Cut Sheet



Socomec FUSERBLOC series rotary disconnect switch, fusible, Class J, load break capable, 3-pole, 600 VAC/250 VDC, 400A, 200kA SCCR, panel mount, UL 98 rated, front or side operated, accepts 10 x 10mm size shaft.

For complete product information, please see this item on our store at the following link:



<https://www.automationdirect.com/pn/38513038>

Technical Specifications

Brand	Socomec
Item	Disconnect switch
Series	FUSERBLOC
Fuse Class	Class J
Fusible	Yes
Load Break Capable	Yes
Number of Poles	3
Voltage Rating	600 VAC/250 VDC
Amperage Rating	400A

SCCR Rating	200kA SCCR
Mounting	Panel
UL Rating	UL 98 rated
Configuration	Front or side operated
Shaft Size	Accepts 10 x 10mm size shaft
Handle Type	Rotary
Additional Information	Purchase fuses and handle separately. Line and load terminal shrouds and lugs sold separately

Agency Approvals

UL Listed File #	E201138
UL Recognized File #	None
UL Hazardous File #	None
CE	View CE declarations
CSA File #	112964
RoHS Status	Yes (See CE Doc)
EU REACH	View EU REACH document

Dimensional Drawings



2D Drawing PDF Link:
<https://cdn.automationdirect.com/static/drawings/38513038.pdf>
See store item page for other formats.