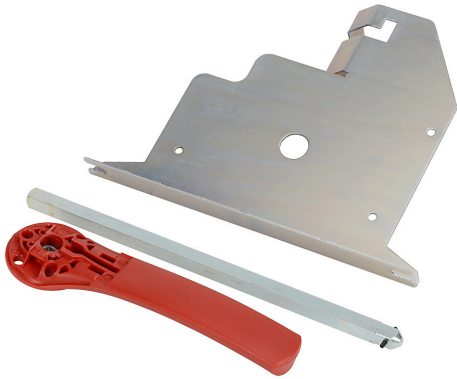


# 37297552 Cut Sheet



Socomec rotary handle, pistol, red, internal mount, 2-position, lockable in OFF only. For use with FUSERBLOC 600A switch bodies. Shaft and hardware assembly included.

For complete product information, please see this item on our store at the following link:



<https://www.automationdirect.com/pn/37297552>

## Technical Specifications

<b>Brand</b>	Socomec
<b>Item</b>	Handle
<b>Handle Type</b>	Rotary
<b>Handle Style</b>	Pistol
<b>Color</b>	Red
<b>Mounting</b>	Internal
<b>Number Of Positions</b>	2
<b>Lockable Positions</b>	OFF only
<b>Defeatable</b>	No
<b>Test Function</b>	No
<b>For Use With</b>	FUSERBLOC 600A switch bodies
<b>Includes</b>	Shaft and hardware assembly
<b>Additional Information</b>	Allows padlocking and switch operation when door is open for UL 508A and NFPA 79 applications. Purchase external handle separately

## Agency Approvals

<b>UL Listed File #</b>	None
<b>UL Recognized File #</b>	E201138
<b>UL Hazardous File #</b>	None
<b>CE</b>	<a href="#">View CE declarations</a>
<b>CSA File #</b>	None
<b>RoHS Status</b>	Yes (See CE Doc)
<b>EU REACH</b>	<a href="#">View EU REACH document</a>