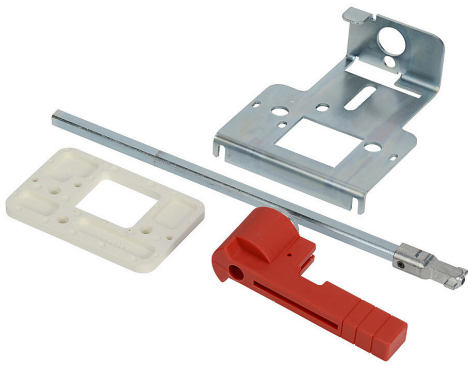


37297540 Cut Sheet



Socomec rotary handle, pistol, red, internal mount, 2-position, lockable in OFF only. For use with FUSERBLOC 30-200A switch bodies. Shaft and hardware assembly included.

For complete product information, please see this item on our store at the following link:



<https://www.automationdirect.com/pn/37297540>

Technical Specifications

Brand	Socomec
Item	Handle
Handle Type	Rotary
Handle Style	Pistol
Color	Red
Mounting	Internal
Number Of Positions	2
Lockable Positions	OFF only
Defeatable	No
Test Function	No
For Use With	FUSERBLOC 30-200A switch bodies
Includes	Shaft and hardware assembly
Additional Information	Allows padlocking and switch operation when door is open for UL 508A and NFPA 79 applications. Purchase external handle separately

Agency Approvals

UL Listed File #	None
UL Recognized File #	E201138
UL Hazardous File #	None
CE	View CE declarations
CSA File #	None
RoHS Status	Yes (See CE Doc)
EU REACH	View EU REACH document