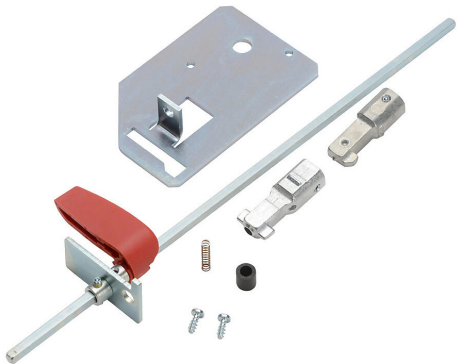


# 37294532 Cut Sheet



Socomec rotary handle, pistol, red, internal mount, 2-position, lockable in OFF only. For use with FUSERBLOC Compact Class J and CC 30A switch bodies. Shaft and hardware assembly included.

For complete product information, please see this item on our store at the following link:



<https://www.automationdirect.com/pn/37294532>

## Technical Specifications

Brand	Socomec
Item	Handle
Handle Type	Rotary
Handle Style	Pistol
Color	Red
Mounting	Internal
Number Of Positions	2
Lockable Positions	OFF only

Defeatable	No
Test Function	No
For Use With	FUSERBLOC Compact Class J and CC 30A switch bodies
Includes	Shaft and hardware assembly
Additional Information	Allows padlocking and switch operation when door is open for UL 508A and NFPA 79 applications. Purchase external handle separately

## Agency Approvals

UL Listed File #	None
UL Recognized File #	E201138
UL Hazardous File #	None
CE	<a href="#">View CE declarations</a>
CSA File #	None
RoHS Status	Yes (See CE Doc)
EU REACH	<a href="#">View EU REACH document</a>

## Dimensional Drawings



2D Drawing PDF Link:  
<https://cdn.automationdirect.com/static/drawings/37294532.pdf>  
See store item page for other formats.