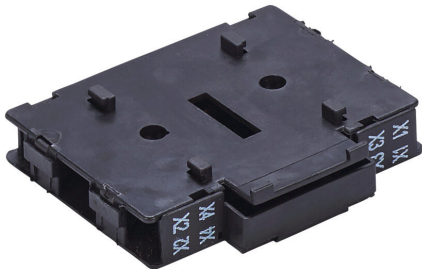


2KL-V Cut Sheet



Merz terminal, left or right side mount, 10A @ 600 VAC. For use with Merz ML1, ML2, ML3 Din Rail mount switch bodies -A01, -A02, -E01R, -E02R, -E03R, -E04R, -E05R.

For complete product information, please see this item on our store at the following link:



<https://www.automationdirect.com/pn/2KL-V>

Technical Specifications

Brand	Merz
Item	Terminal
Mounting	Left or right side
Amperage Rating	10A @ 600 VAC
For Use With	Merz ML1, ML2, ML3 Din Rail mount switch bodies - A01, -A02, -E01R, -E02R, -E03R, -E04R, -E05R
Additional Information	2-pole non-switched

Agency Approvals

UL Listed File #	E195426
UL Recognized File #	None
UL Hazardous File #	None
CE	View CE declarations
CSA File #	None
RoHS Status	Yes (See CE Doc)
EU REACH	View EU REACH document

Dimensional Drawings



2D Drawing PDF Link:
<https://cdn.automationdirect.com/static/drawings/2KL-V.pdf>
See store item page for other formats.