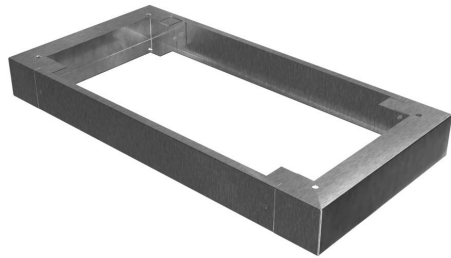


2CSP43618 Cut Sheet



Hammond console plinth, 4 x 36 x 18in, 304 stainless steel, #4 brush finish. For use with 2CSC2036 consoles. Field assembly required.

For complete product information, please see this item on our store at the following link:



<https://www.automationdirect.com/pn/2CSP43618>

Technical Specifications

Brand	Hammond
Item	Console plinth
Height	4in
Width	36in
Depth	18in
Material	304 stainless steel
Finish	#4 brush
Knockouts	Yes
For Use With	2CSC2036 consoles
Includes	Mounting hardware
Additional Information	Field assembly required

Agency Approvals

UL Listed File #	None
UL Recognized File #	None
UL Hazardous File #	None
CSA File #	None
RoHS Status	Meets RoHS Chemical Restrictions - No CE (See RoHS Statement Below)
EU REACH	View EU REACH document
Other	RoHS Statement

Dimensional Drawings



2D Drawing PDF Link:
<https://cdn.automationdirect.com/static/drawings/2d/2CSP43618.pdf>
See store item page for other formats.