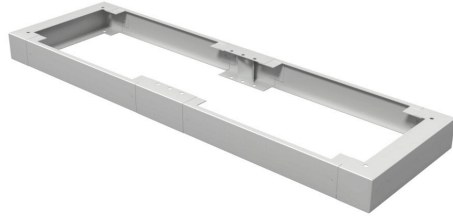


2CLP46018 Cut Sheet

Hammond console plinth, 4 x 60 x 18in, carbon steel, RAL 7035 light gray, powder coat finish. For use with 2CLC2060 consoles. Field assembly required.



For complete product information, please see this item on our store at the following link:



<https://www.automationdirect.com/pn/2CLP46018>

Technical Specifications

Brand	Hammond
Item	Console plinth
Height	4in
Width	60in
Depth	18in
Material	Carbon steel
Color	RAL 7035 light gray
Finish	Powder coat
Knockouts	Yes
For Use With	2CLC2060 consoles
Includes	Mounting hardware
Additional Information	Field assembly required

Agency Approvals

UL Listed File #	None
UL Recognized File #	None
UL Hazardous File #	None
CSA File #	None
RoHS Status	Meets RoHS Chemical Restrictions - No CE (See RoHS Statement Below)
EU REACH	View EU REACH document
Other	RoHS Statement

Dimensional Drawings



2D Drawing PDF Link:
<https://cdn.automationdirect.com/static/drawings/2d/2CLP46018.pdf>
See store item page for other formats.