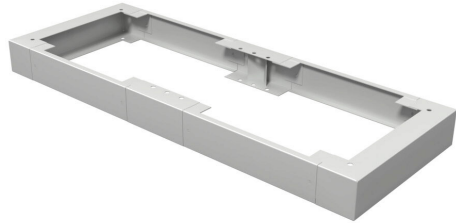


2CLP44818 Cut Sheet



Hammond console plinth, 4 x 48 x 18in, carbon steel, RAL 7035 light gray, powder coat finish. For use with 2CLC2048 consoles. Field assembly required.

For complete product information, please see this item on our store at the following link:



<https://www.automationdirect.com/pn/2CLP44818>

Technical Specifications

| | |
|-------------------------------|-------------------------|
| Brand | Hammond |
| Item | Console plinth |
| Height | 4in |
| Width | 48in |
| Depth | 18in |
| Material | Carbon steel |
| Color | RAL 7035 light gray |
| Finish | Powder coat |
| Knockouts | Yes |
| For Use With | 2CLC2048 consoles |
| Includes | Mounting hardware |
| Additional Information | Field assembly required |

Agency Approvals

| | |
|-----------------------------|---|
| UL Listed File # | None |
| UL Recognized File # | None |
| UL Hazardous File # | None |
| CSA File # | None |
| RoHS Status | Meets RoHS Chemical Restrictions - No CE (See RoHS Statement Below) |
| EU REACH | View EU REACH document |
| Other | RoHS Statement |

Dimensional Drawings



2D Drawing PDF Link:
<https://cdn.automationdirect.com/static/drawings/2d/2CLP44818.pdf>
See store item page for other formats.