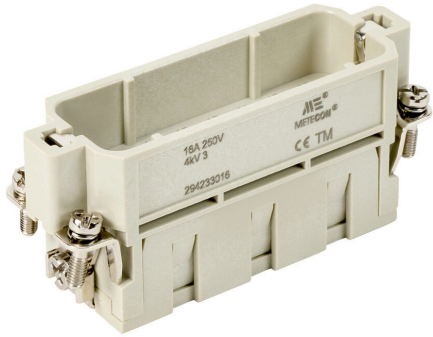


294233016 Cut Sheet



METE male insert, connector housing size 16A, 16-pole, crimped contact, 16 amp, 600 VAC/VDC, poles numbered 1 to 16. For use with METE multi-wire housings. Requires 16 amp male contacts METE 14106xxx.

For complete product information, please see this item on our store at the following link:



<https://www.automationdirect.com/pn/294233016>

Technical Specifications

Brand	METE
Item	Male Insert
Connector Housing Size	16A
Number of Poles	16
Termination Type	Crimped contact
Amperage Rating	16 amp
Voltage Rating	600 VAC/VDC
Pole Marking	Numbered 1-16
For Use With	METE multi-wire housings
Requires	16 amp male contacts METE 14106xxx

Agency Approvals

UL Listed File #	None
UL Recognized File #	None
UL Hazardous File #	None
CE	View CE declarations
CSA File #	None
RoHS Status	Yes (See CE Doc)
EU REACH	View EU REACH document

Dimensional Drawings



2D Drawing PDF Link:
<https://cdn.automationdirect.com/static/drawings/2d/294233016.pdf>
See store item page for other formats.