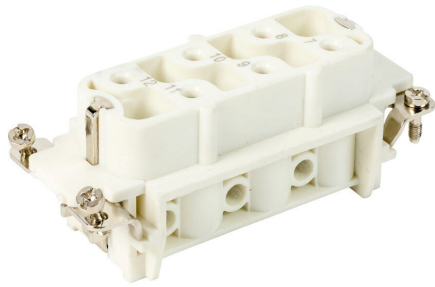


29128 Cut Sheet



METE female insert, connector housing size 32B, 6-pole, screw terminal, accepts wire size 16–10 AWG, 35 amp, 600 VAC/VDC, poles numbered 7 to 12. For use with METE multi-wire housings.

For complete product information, please see this item on our store at the following link:



<https://www.automationdirect.com/pn/29128>

Technical Specifications

Brand	METE
Item	Female Insert
Connector Housing Size	32B
Number of Poles	6
Termination Type	Screw terminal
Wire Size	16–10 AWG
Amperage Rating	35 amp
Voltage Rating	600 VAC/VDC
Pole Marking	Numbered 7–12
For Use With	METE multi-wire housings

Agency Approvals

UL Listed File #	None
UL Recognized File #	E307105
UL Hazardous File #	None
CE	View CE declarations
CSA File #	None
RoHS Status	Yes (See CE Doc)
EU REACH	View EU REACH document

Dimensional Drawings



2D Drawing PDF Link:
<https://cdn.automationdirect.com/static/drawings/2d/29128.pdf>
See store item page for other formats.