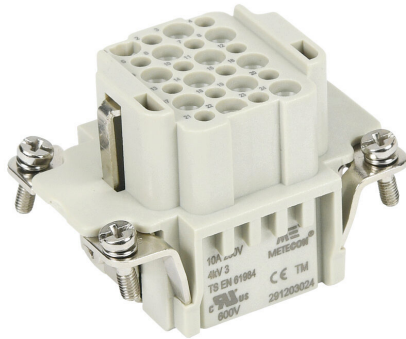


291203024 Cut Sheet



METE female insert, connector housing size 6B, 24-pole, crimped contact, 10 amp, 600 VAC/VDC, poles numbered 1 to 24. For use with METE multi-wire housings. Requires 10 amp female contacts METE 14103xxx.

For complete product information, please see this item on our store at the following link:



<https://www.automationdirect.com/pn/291203024>

Technical Specifications

Brand	METE
Item	Female Insert
Connector Housing Size	6B
Number of Poles	24
Termination Type	Crimped contact
Amperage Rating	10 amp
Voltage Rating	600 VAC/VDC
Pole Marking	Numbered 1 to 24
For Use With	METE multi-wire housings
Requires	10 amp female contacts METE 14103xxx

Agency Approvals

UL Listed File #	None
UL Recognized File #	E307105
UL Hazardous File #	None
CE	View CE declarations
CSA File #	None
RoHS Status	Yes (See CE Doc)
EU REACH	View EU REACH document

Dimensional Drawings



2D Drawing PDF Link:
<https://cdn.automationdirect.com/static/drawings/2d/291203024.pdf>
See store item page for other formats.