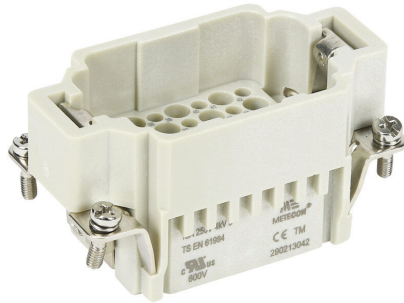


# 290213042 Cut Sheet



METE male insert, connector housing size 10B, 42-pole, crimped contact, 10 amp, 600 VAC/VDC, poles numbered 1 to 42. For use with METE multi-wire housings. Requires 10 amp male contacts METE 14104xxx.

For complete product information, please see this item on our store at the following link:



<https://www.automationdirect.com/pn/290213042>

## Technical Specifications

<b>Brand</b>	METE
<b>Item</b>	Male Insert
<b>Connector Housing Size</b>	10B
<b>Number of Poles</b>	42
<b>Termination Type</b>	Crimped contact
<b>Amperage Rating</b>	10 amp
<b>Voltage Rating</b>	600 VAC/VDC
<b>Pole Marking</b>	Numbered 1 to 42
<b>For Use With</b>	METE multi-wire housings
<b>Requires</b>	10 amp male contacts METE 14104xxx

## Agency Approvals

<b>UL Listed File #</b>	None
<b>UL Recognized File #</b>	E307105
<b>UL Hazardous File #</b>	None
<b>CE</b>	<a href="#">View CE declarations</a>
<b>CSA File #</b>	None
<b>RoHS Status</b>	Yes (See CE Doc)
<b>EU REACH</b>	<a href="#">View EU REACH document</a>

## Dimensional Drawings



2D Drawing PDF Link:  
<https://cdn.automationdirect.com/static/drawings/2d/290213042.pdf>  
See store item page for other formats.