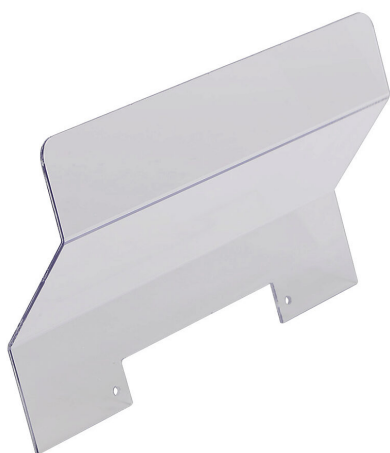


27983060 Cut Sheet



Socomec terminal screen, line or load side, 3-pole. For use with SIRCO 600A switch bodies.

For complete product information, please see this item on our store at the following link:



<https://www.automationdirect.com/pn/27983060>

Technical Specifications

Brand	Socomec
Item	Terminal screen
Cover Type	Line or load side
Number of Poles	3
For Use With	SIRCO 600A switch bodies

Agency Approvals

UL Listed File #	None
UL Recognized File #	E201138
UL Hazardous File #	None
CE	View CE declarations
CSA File #	112964
RoHS Status	Yes (See CE Doc)
EU REACH	View EU REACH document