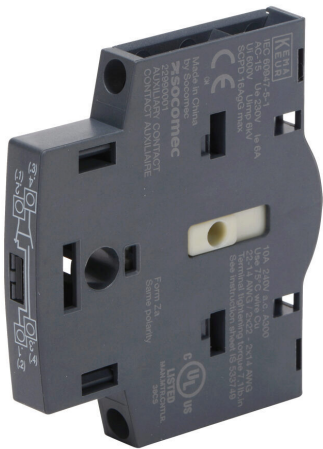


22990001 Cut Sheet



Socomec auxiliary contact, left or right side mount, (1) N.O. pre-break/(1) N.C. contact(s), 6A @ 120 VAC. For use with SIRCO M and SIRCO M Compact 16-100A switch bodies.

For complete product information, please see this item on our store at the following link:



<https://www.automationdirect.com/pn/22990001>

Technical Specifications

Brand	Socomec
Item	Auxiliary contact
Mounting	Left or right side
Contact Type	(1) N.O. pre-break/(1) N.C.
Amperage Rating	6A @ 120 VAC
For Use With	SIRCO M and SIRCO M Compact 16-100A switch bodies

Agency Approvals

UL Listed File #	E173959
UL Recognized File #	None
UL Hazardous File #	None
CE	View CE declarations
CSA File #	2186005
RoHS Status	Yes (See CE Doc)
EU REACH	View EU REACH document