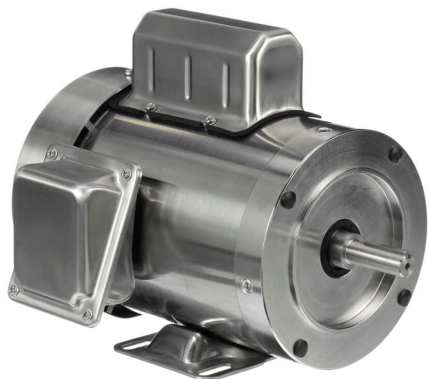


191479.00 Cut Sheet



Leeson Washguard SST Duck standard efficiency AC induction motor, washdown, 1hp, 1-phase, 115/230 VAC, 1800rpm, TEFC, 56C frame, stainless steel, C-face/rigid base mount.

For complete product information, please see this item on our store at the following link:



<https://www.automationdirect.com/pn/191479.00>

Technical Specifications

Brand	Leeson
Item	Motor
Series	Washguard SST Duck
Efficiency Group	Standard efficiency
Efficiency	69
Voltage Type	AC
Motor Type	Induction
Motor Application	Washdown
Horsepower Rating	1hp
Number of Phases	1
Voltage Rating	115/230 VAC
Synchronous Speed	1800rpm
Nameplate RPM	1725rpm
Overload Type	None
Enclosure Type	TEFC

Shaft Type	Round with square key
Shaft Diameter	5/8in
Shaft Material	AISI 1045 (C-240) steel
Motor Frame	56C
Frame Material	Stainless steel
Electrically Reversible	Yes
Insulation Class	Class F
IP Rating	IP55
Service Factor	1.15
Integrated Brake	No
NEMA Design	Design N
Junction Box Orientation	F1
Mounting	C-face/rigid base
Mounting Orientation	Horizontal or vertical

Agency Approvals

UL Listed File #	None
UL Recognized File #	E49747
UL Hazardous File #	None
CE	View CE declarations
CSA File #	LR2025
RoHS Status	Yes (See CE Doc)
EU REACH	View EU REACH document

Dimensional Drawings



2D Drawing PDF Link:
<https://cdn.automationdirect.com/static/drawings/191479.00.pdf>
See store item page for other formats.