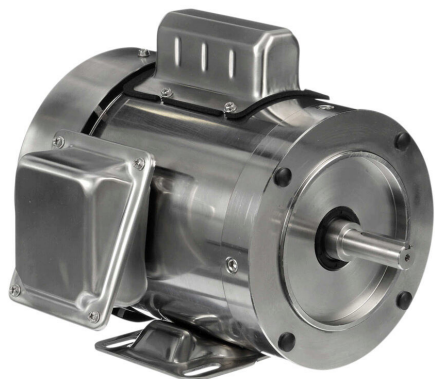


191475.00 Cut Sheet



Leeson Washguard SST Duck standard efficiency AC induction motor, washdown, 1/2hp, 1-phase, 115/230 VAC, 1800rpm, TEFC, NEMA 56C frame, stainless steel, C-face/rigid base mount.

For complete product information, please see this item on our store at the following link:



<https://www.automationdirect.com/pn/191475.00>

Technical Specifications

Brand	Leeson
Item	Motor
Series	Washguard SST Duck
Efficiency Group	Standard efficiency
Efficiency	61
Voltage Type	AC
Motor Type	Induction
Motor Application	Washdown
Horsepower Rating	1/2hp
Number of Phases	1
Voltage Rating	115/230 VAC
Synchronous Speed	1800rpm
Nameplate RPM	1725rpm
Overload Type	None
Enclosure Type	TEFC

Shaft Type	Round with square key
Shaft Diameter	5/8in
Shaft Material	AISI 1045 (C-240) steel
Motor Frame	NEMA 56C
Frame Material	Stainless steel
Electrically Reversible	Yes
Insulation Class	Class F
IP Rating	IP55
Service Factor	1.15
Integrated Brake	No
NEMA Design	Design N
Junction Box Orientation	F1
Mounting	C-face/rigid base
Mounting Orientation	Horizontal or vertical

Agency Approvals

UL Listed File #	None
UL Recognized File #	E49747
UL Hazardous File #	None
CE	View CE declarations
CSA File #	LR2025
RoHS Status	Yes (See CE Doc)
EU REACH	View EU REACH document

Dimensional Drawings



2D Drawing PDF Link:
<https://cdn.automationdirect.com/static/drawings/191475.00.pdf>
See store item page for other formats.