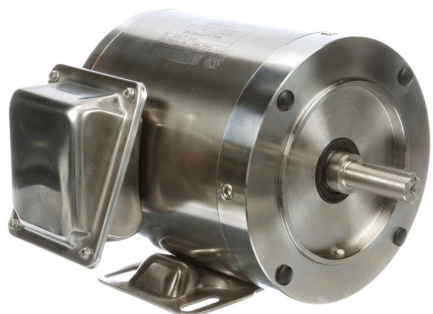


191206.00 Cut Sheet



Leeson Washguard SST Duck standard efficiency AC induction motor, washdown and high-performance inverter duty, 3/4hp, 3-phase, 208-230/460 VAC, 3600rpm, TENV, 56C frame, stainless steel, C-face/rigid base mount.

For complete product information, please see this item on our store at the following link:



<https://www.automationdirect.com/pn/191206.00>

Technical Specifications

Brand	Leeson
Item	Motor
Series	Washguard SST Duck
Efficiency Group	Standard efficiency
Efficiency	78.5
Voltage Type	AC
Motor Type	Induction
Motor Application	Washdown and high-performance inverter duty
Horsepower Rating	3/4hp
Number of Phases	3
Voltage Rating	208-230/460 VAC
Synchronous Speed	3600rpm
Nameplate RPM	3450rpm
Overload Type	None
Enclosure Type	TENV
Shaft Type	Round with square key

Shaft Diameter	5/8in
Shaft Material	1045 hot rolled (C-204) steel
Motor Frame	56C
Frame Material	Stainless steel
Electrically Reversible	Yes
Insulation Class	Class F
IP Rating	IP55
Constant Torque Rating	1000:1
Variable Torque Rating	10:1
Service Factor	1.15
Integrated Brake	No
NEMA Design	Design B
Junction Box Orientation	F1 reversible
Mounting	C-face/rigid base
Mounting Orientation	Horizontal or vertical

Agency Approvals

UL Listed File #	None
UL Recognized File #	E49747
UL Hazardous File #	None
CE	View CE declarations
CSA File #	LR2025
RoHS Status	Yes (See CE Doc)
EU REACH	View EU REACH document

Dimensional Drawings



2D Drawing PDF Link:
<https://cdn.automationdirect.com/static/drawings/191206.00.pdf>
See store item page for other formats.