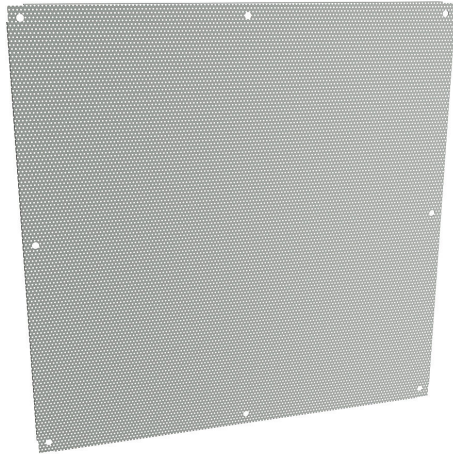


# 18P3333PP Cut Sheet



Hammond subpanel, perforated, carbon steel, ANSI 61 gray, powder coat finish. For use with 36x36 (HxW) 1418xxxx, C3R3636xxHCR, and HW363612xxHK enclosures.

For complete product information, please see this item on our store at the following link:



<https://www.automationdirect.com/pn/18P3333PP>

## Technical Specifications

<b>Brand</b>	Hammond
<b>Item</b>	Subpanel
<b>Subpanel Type</b>	Perforated
<b>Height</b>	33in
<b>Width</b>	33in
<b>Thickness</b>	16 gauge
<b>Material</b>	Carbon steel
<b>Color</b>	ANSI 61 gray
<b>Finish</b>	Powder coat
<b>Perforations accept self-tapping screws for mounting lightweight components</b>	Yes
<b>For Use With</b>	36x36 (HxW) 1418xxxx, C3R3636xxHCR, and HW363612xxHK enclosures

## Agency Approvals

<b>UL Listed File #</b>	None
<b>UL Recognized File #</b>	None
<b>UL Hazardous File #</b>	None
<b>CSA File #</b>	None
<b>RoHS Status</b>	Meets RoHS Chemical Restrictions - No CE (See RoHS Statement Below)
<b>EU REACH</b>	<a href="#">View EU REACH document</a>

## Dimensional Drawings



2D Drawing PDF Link:  
<https://cdn.automationdirect.com/static/drawings/18P3333PP.pdf>  
See store item page for other formats.