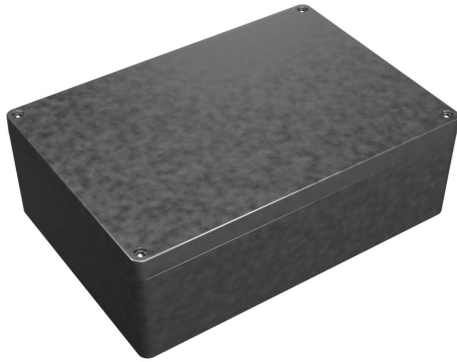


1590Z235 Cut Sheet



Hammond enclosure, NEMA 4/4X/6/6P, 331 x 231 x 112mm (HxWxD), die-cast aluminum alloy, screw cover, purchase subpanel separately.

For complete product information, please see this item on our store at the following link:



<https://www.automationdirect.com/pn/1590Z235>

Technical Specifications

Brand	Hammond
Item	Enclosure
Subpanel	Purchase subpanel separately
NEMA Rating	4/4X/6/6P
IP Rating	IP68
Enclosure Height	331.00mm
Enclosure Width	231.00mm
Enclosure Depth	112.00mm
Cover Type	Screw cover
Cover Depth	20mm
Integral Mounting Flange	No
Material	Die-cast aluminum alloy

Agency Approvals

UL Listed File #	None
UL Recognized File #	None
UL Hazardous File #	None
CSA File #	None
RoHS Status	Meets RoHS Chemical Restrictions - No CE (See RoHS Statement Below)
EU REACH	View EU REACH document
Other	RoHS Statement