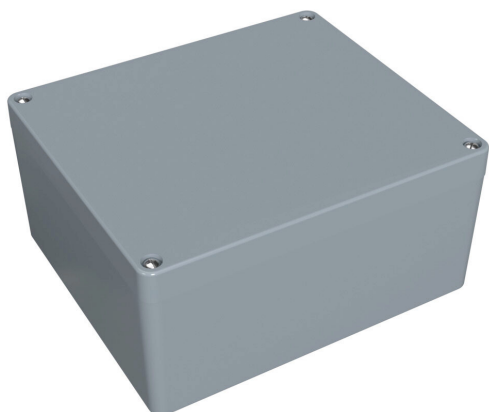


1590Z231GY Cut Sheet



Hammond enclosure, NEMA 4/4X/6/6P, 230 x 200 x 110mm (HxWxD), die-cast aluminum alloy, RAL 7001 light gray, powder coat finish, screw cover, purchase subpanel separately.

For complete product information, please see this item on our store at the following link:



<https://www.automationdirect.com/pn/1590Z231GY>

Technical Specifications

| | |
|-------------------------|------------------------------|
| Brand | Hammond |
| Item | Enclosure |
| Subpanel | Purchase subpanel separately |
| NEMA Rating | 4/4X/6/6P |
| IP Rating | IP68 |
| Enclosure Height | 230.00mm |
| Enclosure Width | 200.00mm |

| | |
|---------------------------------|-------------------------|
| Enclosure Depth | 110.00mm |
| Cover Type | Screw cover |
| Cover Depth | 20mm |
| Integral Mounting Flange | No |
| Material | Die-cast aluminum alloy |
| Color | RAL 7001 light gray |
| Finish | Powder coat |

Agency Approvals

| | |
|-----------------------------|---|
| UL Listed File # | None |
| UL Recognized File # | None |
| UL Hazardous File # | None |
| CSA File # | None |
| RoHS Status | Meets RoHS Chemical Restrictions - No CE (See RoHS Statement Below) |
| EU REACH | View EU REACH document |
| Other | RoHS Statement |

Dimensional Drawings



2D Drawing PDF Link:
<https://cdn.automationdirect.com/static/drawings/1590Z231GY.pdf>
See store item page for other formats.