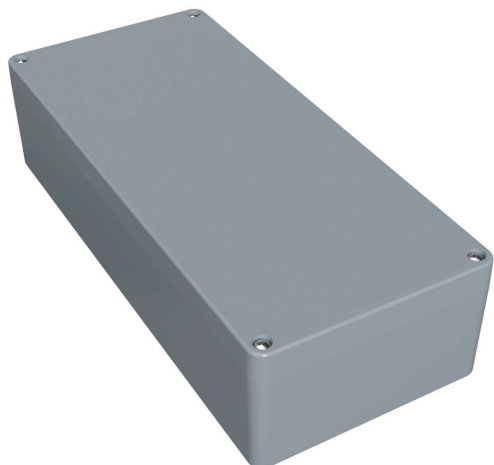


1590Z166GY Cut Sheet



Hammond enclosure, NEMA 4/4X/6/6P, 360 x 160 x 90mm (HxWxD), die-cast aluminum alloy, RAL 7001 light gray, powder coat finish, screw cover, purchase subpanel separately.

For complete product information, please see this item on our store at the following link:



<https://www.automationdirect.com/pn/1590Z166GY>

Technical Specifications

Brand	Hammond
Item	Enclosure
Subpanel	Purchase subpanel separately
NEMA Rating	4/4X/6/6P
IP Rating	IP68
Enclosure Height	360.00mm
Enclosure Width	160.00mm

Enclosure Depth	90.00mm
Cover Type	Screw cover
Cover Depth	20mm
Integral Mounting Flange	No
Material	Die-cast aluminum alloy
Color	RAL 7001 light gray
Finish	Powder coat

Agency Approvals

UL Listed File #	None
UL Recognized File #	None
UL Hazardous File #	None
CSA File #	None
RoHS Status	Meets RoHS Chemical Restrictions - No CE (See RoHS Statement Below)
EU REACH	View EU REACH document
Other	RoHS Statement

Dimensional Drawings



2D Drawing PDF Link:
<https://cdn.automationdirect.com/static/drawings/1590Z166GY.pdf>
See store item page for other formats.