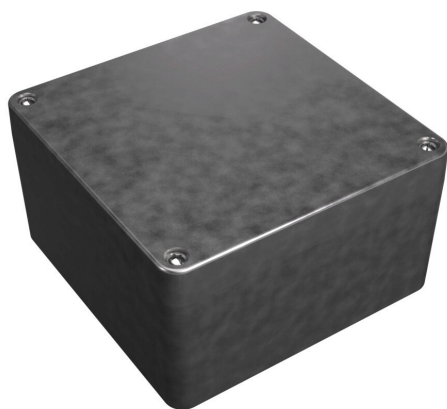


# 1590Z160 Cut Sheet



Hammond enclosure, NEMA 4/4X/6/6P, 160 x 160 x 90mm (HxWxD), die-cast aluminum alloy, screw cover, purchase subpanel separately.

For complete product information, please see this item on our store at the following link:



<https://www.automationdirect.com/pn/1590Z160>

## Technical Specifications

<b>Brand</b>	Hammond
<b>Item</b>	Enclosure
<b>Subpanel</b>	Purchase subpanel separately
<b>NEMA Rating</b>	4/4X/6/6P
<b>IP Rating</b>	IP68
<b>Enclosure Height</b>	160.00mm
<b>Enclosure Width</b>	160.00mm
<b>Enclosure Depth</b>	90.00mm
<b>Cover Type</b>	Screw cover
<b>Cover Depth</b>	20mm
<b>Integral Mounting Flange</b>	No
<b>Material</b>	Die-cast aluminum alloy

## Agency Approvals

<b>UL Listed File #</b>	None
<b>UL Recognized File #</b>	None
<b>UL Hazardous File #</b>	None
<b>CSA File #</b>	None
<b>RoHS Status</b>	Meets RoHS Chemical Restrictions - No CE (See RoHS Statement Below)
<b>EU REACH</b>	<a href="#">View EU REACH document</a>
<b>Other</b>	<a href="#">RoHS Statement</a>

## Dimensional Drawings



2D Drawing PDF Link:  
<https://cdn.automationdirect.com/static/drawings/1590Z160.pdf>  
See store item page for other formats.