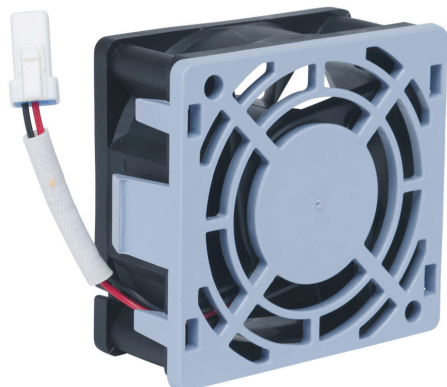


15746587 Cut Sheet



WEG Electric CFW500 series main cooling fan, replacement, 60 x 60 x 25mm, 12 VDC. For use with WEG CFW500 series IP66 230 VAC 7-1/2hp and below, 460 VAC 10hp and below AC drives.

For complete product information, please see this item on our store at the following link:



<https://www.automationdirect.com/pn/15746587>

Technical Specifications

Brand	WEG Electric
Item	Cooling fan
Fan Type	Main
Series	CFW500
Replacement	Yes
Size	60 x 60 x 25mm
Voltage Rating	12 VDC
For Use With	WEG CFW500 series IP66 230 VAC 7-1/2hp and below, 460 VAC 10hp and below AC drives
Manufacturer Part Number	CFW500-66-FAN-AB

Agency Approvals

UL Listed File #	None
UL Recognized File #	None
UL Hazardous File #	None
CE	None
CSA File #	None
RoHS Status	No
EU REACH	View EU REACH document

Dimensional Drawings



2D Drawing PDF Link:
<https://cdn.automationdirect.com/static/drawings/2d/15746587.pdf>
See store item page for other formats.