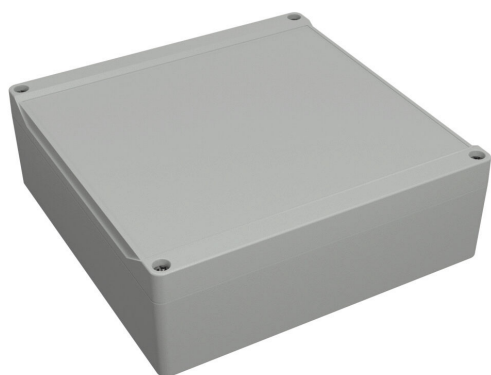


1555W2GY Cut Sheet



Hammond enclosure, NEMA 4/4X/6/6P/12/13, 180 x 180 x 60mm (HxWxD), polycarbonate, RAL 7035 light gray, screw cover with smooth recess, purchase subpanel separately.

For complete product information, please see this item on our store at the following link:



<https://www.automationdirect.com/pn/1555W2GY>

Technical Specifications

| | |
|---------------------------------|--------------------------------|
| Brand | Hammond |
| Item | Enclosure |
| Subpanel | Purchase subpanel separately |
| NEMA Rating | 4/4X/6/6P/12/13 |
| IP Rating | IP68 |
| Enclosure Height | 180.00mm |
| Enclosure Width | 180.00mm |
| Enclosure Depth | 60.00mm |
| Cover Type | Screw cover with smooth recess |
| Cover Depth | 15mm |
| Integral Mounting Flange | No |
| Material | Polycarbonate |
| Color | RAL 7035 light gray |

Agency Approvals

| | |
|-----------------------------|---|
| UL Listed File # | None |
| UL Recognized File # | None |
| UL Hazardous File # | None |
| CSA File # | None |
| RoHS Status | Meets RoHS Chemical Restrictions - No CE (See RoHS Statement Below) |
| EU REACH | View EU REACH document |
| Other | RoHS Statement |

Dimensional Drawings



2D Drawing PDF Link:
<https://cdn.automationdirect.com/static/drawings/1555W2GY.pdf>
See store item page for other formats.