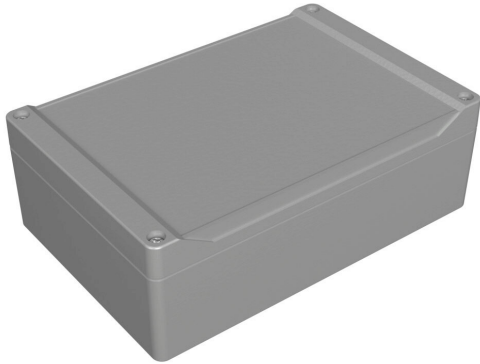


# 1555H2GY Cut Sheet



Hammond enclosure, NEMA 4/4X/6/6P/12/13, 180 x 120 x 61mm (HxWxD), polycarbonate, RAL 7035 light gray, screw cover with smooth recess, purchase subpanel separately.

For complete product information, please see this item on our store at the following link:



<https://www.automationdirect.com/pn/1555H2GY>

## Technical Specifications

<b>Brand</b>	Hammond
<b>Item</b>	Enclosure
<b>Subpanel</b>	Purchase subpanel separately
<b>NEMA Rating</b>	4/4X/6/6P/12/13
<b>IP Rating</b>	IP68
<b>Enclosure Height</b>	180.00mm
<b>Enclosure Width</b>	120.00mm
<b>Enclosure Depth</b>	61.00mm
<b>Cover Type</b>	Screw cover with smooth recess
<b>Cover Depth</b>	15mm
<b>Integral Mounting Flange</b>	No
<b>Material</b>	Polycarbonate
<b>Color</b>	RAL 7035 light gray

## Agency Approvals

<b>UL Listed File #</b>	None
<b>UL Recognized File #</b>	None
<b>UL Hazardous File #</b>	None
<b>CSA File #</b>	None
<b>RoHS Status</b>	Meets RoHS Chemical Restrictions - No CE (See RoHS Statement Below)
<b>EU REACH</b>	<a href="#">View EU REACH document</a>
<b>Other</b>	<a href="#">RoHS Statement</a>

## Dimensional Drawings



2D Drawing PDF Link:  
<https://cdn.automationdirect.com/static/drawings/1555H2GY.pdf>  
See store item page for other formats.