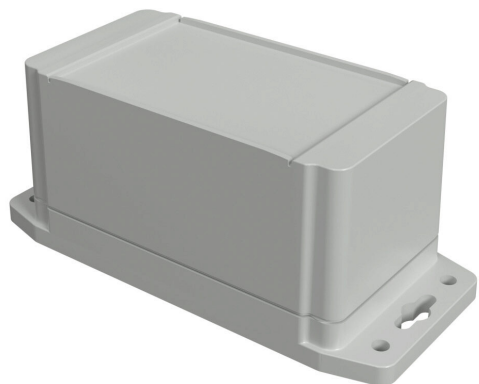


1555C2F42GY Cut Sheet



Hammond enclosure, NEMA 4/4X/6/6P/12/13, 120 x 66 x 63mm (HxWxD), integral mounting flange, polycarbonate, RAL 7035 light gray, screw cover, purchase subpanel separately.

For complete product information, please see this item on our store at the following link:



<https://www.automationdirect.com/pn/1555C2F42GY>

Technical Specifications

Brand	Hammond
Item	Enclosure
Subpanel	Purchase subpanel separately
NEMA Rating	4/4X/6/6P/12/13
IP Rating	IP68
Enclosure Height	120.00mm
Enclosure Width	66.00mm
Enclosure Depth	63.00mm
Cover Type	Screw cover
Cover Depth	47mm
Integral Mounting Flange	Yes
Material	Polycarbonate
Color	RAL 7035 light gray

Agency Approvals

UL Listed File #	E65324
UL Recognized File #	None
UL Hazardous File #	None
CSA File #	None
RoHS Status	Meets RoHS Chemical Restrictions - No CE (See RoHS Statement Below)
EU REACH	View EU REACH document
Other	RoHS Statement