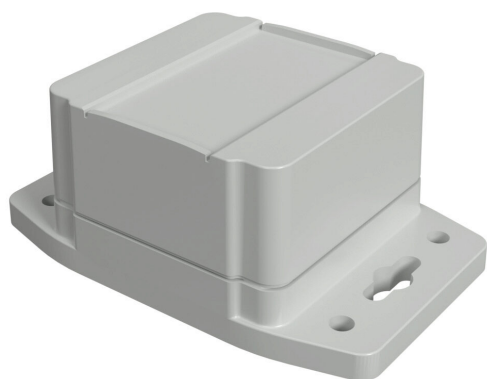


# 1555BF22GY Cut Sheet



Hammond enclosure, NEMA 4/4X/6/6P/12/13, 65 x 65 x 43mm (HxWxD), integral mounting flange, ABS plastic, RAL 7035 light gray, screw cover, purchase subpanel separately.

For complete product information, please see this item on our store at the following link:



<https://www.automationdirect.com/pn/1555BF22GY>

## Technical Specifications

<b>Brand</b>	Hammond
<b>Item</b>	Enclosure
<b>Subpanel</b>	Purchase subpanel separately
<b>IP Rating</b>	IP66
<b>Enclosure Height</b>	65.00mm
<b>Enclosure Width</b>	65.00mm
<b>Enclosure Depth</b>	43.00mm
<b>Cover Type</b>	Screw cover
<b>Cover Depth</b>	28mm
<b>Integral Mounting Flange</b>	Yes
<b>Material</b>	ABS plastic
<b>Color</b>	RAL 7035 light gray

## Agency Approvals

<b>UL Listed File #</b>	E65324
<b>UL Recognized File #</b>	None
<b>UL Hazardous File #</b>	None
<b>CSA File #</b>	None
<b>RoHS Status</b>	Meets RoHS Chemical Restrictions - No CE (See RoHS Statement Below)
<b>EU REACH</b>	<a href="#">View EU REACH document</a>
<b>Other</b>	<a href="#">RoHS Statement</a>

## Dimensional Drawings



2D Drawing PDF Link:  
<https://cdn.automationdirect.com/static/drawings/1555BF22GY.pdf>  
See store item page for other formats.