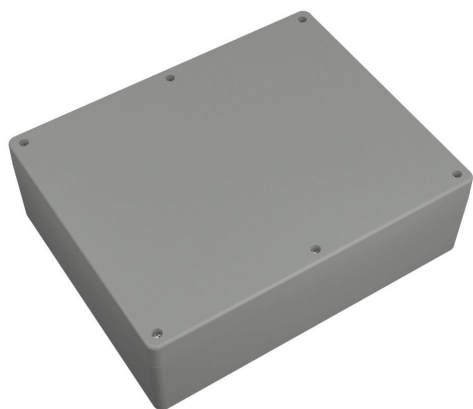


# 1554Y2GY Cut Sheet



Hammond enclosure, NEMA 4/4X/6/6P/12/13, 299 x 240 x 95mm (HxWxD), polycarbonate, RAL 7035 light gray, screw cover, purchase subpanel separately.

For complete product information, please see this item on our store at the following link:



<https://www.automationdirect.com/pn/1554Y2GY>

---

## Technical Specifications

|                                 |                              |
|---------------------------------|------------------------------|
| <b>Brand</b>                    | Hammond                      |
| <b>Item</b>                     | Enclosure                    |
| <b>Subpanel</b>                 | Purchase subpanel separately |
| <b>NEMA Rating</b>              | 4/4X/6/6P/12/13              |
| <b>IP Rating</b>                | IP68                         |
| <b>Enclosure Height</b>         | 299.00mm                     |
| <b>Enclosure Width</b>          | 240.00mm                     |
| <b>Enclosure Depth</b>          | 95.00mm                      |
| <b>Cover Type</b>               | Screw cover                  |
| <b>Cover Depth</b>              | 25mm                         |
| <b>Integral Mounting Flange</b> | No                           |
| <b>Material</b>                 | Polycarbonate                |
| <b>Color</b>                    | RAL 7035 light gray          |

---

## Agency Approvals

|                             |  |
|-----------------------------|--|
| <b>UL Listed File #</b>     | E65324   |
| <b>UL Recognized File #</b> | None   |
| <b>UL Hazardous File #</b>  | None   |
| <b>CSA File #</b>           | None   |
| <b>RoHS Status</b>          | Meets RoHS Chemical Restrictions -<br>No CE (See RoHS Statement Below) |
| <b>EU REACH</b>             | <a href="#">View EU REACH document</a>                                 |
| <b>Other</b>                | <a href="#">RoHS Statement</a>   |