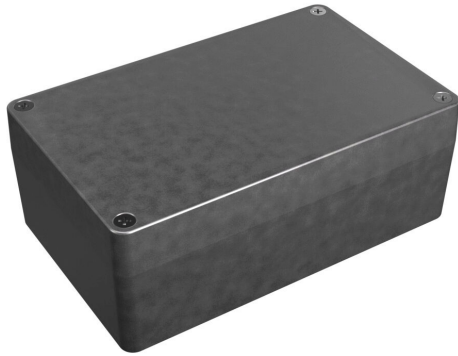


1550Z116 Cut Sheet



Hammond enclosure, NEMA 1/4/4X/12/13, 160 x 100 x 60mm (HxWxD), die-cast aluminum alloy, screw cover.

For complete product information, please see this item on our store at the following link:



<https://www.automationdirect.com/pn/1550Z116>

Technical Specifications

Brand	Hammond
Item	Enclosure
NEMA Rating	1/4/4X/12/13
IP Rating	IP66
Enclosure Height	160.00mm
Enclosure Width	100.00mm
Enclosure Depth	60.00mm
Cover Type	Screw cover
Cover Depth	20mm
Integral Mounting Flange	No
Material	Die-cast aluminum alloy

Agency Approvals

UL Listed File #	None
UL Recognized File #	None
UL Hazardous File #	None
CSA File #	None
RoHS Status	Meets RoHS Chemical Restrictions - No CE (See RoHS Statement Below)
EU REACH	View EU REACH document
Other	RoHS Statement