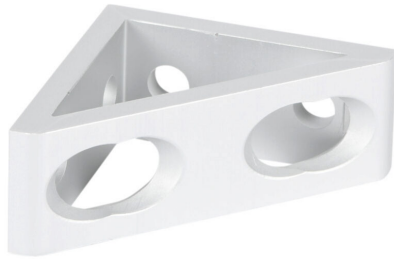


# 151064 Cut Sheet



FATH tall gusseted inside corner bracket, silver, 90-degree, 4 holes, anodized aluminum, slot size 6. For use with all 1in and 2in profile T-slotted rails. Manufacturer part number: 093W8103N06.

For complete product information, please see this item on our store at the following link:



<https://www.automationdirect.com/pn/151064>

---

## Technical Specifications

<b>Brand</b>	FATH
<b>Item</b>	Tall gusseted inside corner bracket
<b>Series</b>	10 Series
<b>Color</b>	Silver
<b>Angle</b>	90-degree
<b>Number Of Holes</b>	4
<b>Material</b>	Anodized aluminum
<b>Slot Size</b>	6
<b>For Use With</b>	All 1in and 2in profile T-slotted rails
<b>Manufacturer Part Number</b>	093W8103N06

---

## Agency Approvals

<b>UL Listed File #</b>	None
<b>UL Recognized File #</b>	None
<b>UL Hazardous File #</b>	None
<b>CE</b>	None
<b>CSA File #</b>	None
<b>RoHS Status</b>	Meets RoHS Chemical Restrictions - No CE (See RoHS Statement Below)
<b>EU REACH</b>	<a href="#">View EU REACH document</a>
<b>Other</b>	<a href="#">RoHS Statement</a>

---

## Dimensional Drawings



2D Drawing PDF Link:  
<https://cdn.automationdirect.com/static/drawings/151064.pdf>  
See store item page for other formats.