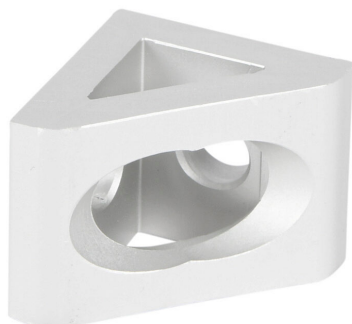


# 151063-10 Cut Sheet



FATH gusseted inside corner bracket, silver, 90-degree, 2 holes, anodized aluminum, slot size 6. Package of 10. For use with all 1in and 2in profile T-slotted rails. Manufacturer part number: 093W8104N06.

For complete product information, please see this item on our store at the following link:



<https://www.automationdirect.com/pn/151063-10>

## Technical Specifications

Brand	FATH
Item	Gusseted inside corner bracket
Series	10 Series
Color	Silver
Angle	90-degree
Number Of Holes	2
Material	Anodized aluminum
Slot Size	6
Quantity per Pack	10
For Use With	All 1in and 2in profile T-slotted rails
Manufacturer Part Number	093W8104N06

## Agency Approvals

UL Listed File #	None
UL Recognized File #	None
UL Hazardous File #	None
CE	None
CSA File #	None
RoHS Status	Meets RoHS Chemical Restrictions - No CE (See RoHS Statement Below)
EU REACH	<a href="#">View EU REACH document</a>
Other	<a href="#">RoHS Statement</a>

## Dimensional Drawings



2D Drawing PDF Link:  
<https://cdn.automationdirect.com/static/drawings/2d/151063-10.pdf>  
See store item page for other formats.