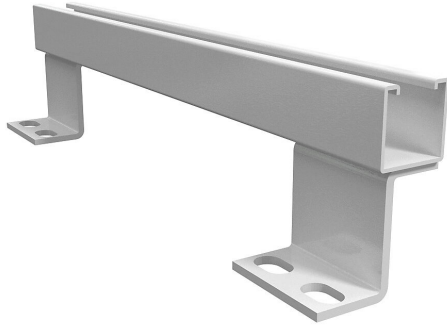


# 14B6 Cut Sheet



Hammond enclosure terminal bracket, carbon steel, vertical or horizontal mount, RAL 9003 white, powder coat finish. Package of 2. For use with 6in (H or W) 1414 enclosures.

For complete product information, please see this item on our store at the following link:



<https://www.automationdirect.com/pn/14B6>

## Technical Specifications

<b>Brand</b>	Hammond
<b>Item</b>	Enclosure terminal bracket
<b>Material</b>	Carbon steel
<b>Mounting</b>	Vertical or horizontal
<b>Color</b>	RAL 9003 white
<b>Finish</b>	Powder coat
<b>Quantity per Pack</b>	2
<b>For Use With</b>	6in (H or W) 1414 enclosures
<b>Additional Information</b>	Purchase terminal blocks and terminal straps separately

## Agency Approvals

<b>UL Listed File #</b>	None
<b>UL Recognized File #</b>	None
<b>UL Hazardous File #</b>	None
<b>CSA File #</b>	None
<b>RoHS Status</b>	Meets RoHS Chemical Restrictions - No CE (See RoHS Statement Below)
<b>EU REACH</b>	<a href="#">View EU REACH document</a>

## Dimensional Drawings



2D Drawing PDF Link:  
<https://cdn.automationdirect.com/static/drawings/14B6.pdf>  
See store item page for other formats.