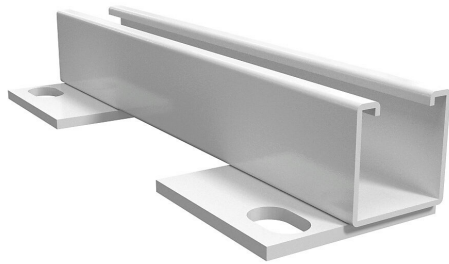


14B12 Cut Sheet



Hammond enclosure terminal bracket, carbon steel, vertical or horizontal mount, RAL 9003 white, powder coat finish. Package of 2. For use with 12in (H or W) 1414 enclosures.

For complete product information, please see this item on our store at the following link:



<https://www.automationdirect.com/pn/14B12>

Technical Specifications

Brand	Hammond
Item	Enclosure terminal bracket
Material	Carbon steel
Mounting	Vertical or horizontal
Color	RAL 9003 white
Finish	Powder coat
Quantity per Pack	2
For Use With	12in (H or W) 1414 enclosures
Additional Information	Purchase terminal blocks and terminal straps separately

Agency Approvals

UL Listed File #	None
UL Recognized File #	None
UL Hazardous File #	None
CSA File #	None
RoHS Status	Meets RoHS Chemical Restrictions - No CE (See RoHS Statement Below)
EU REACH	View EU REACH document

Dimensional Drawings



2D Drawing PDF Link:
<https://cdn.automationdirect.com/static/drawings/14B12.pdf>
See store item page for other formats.