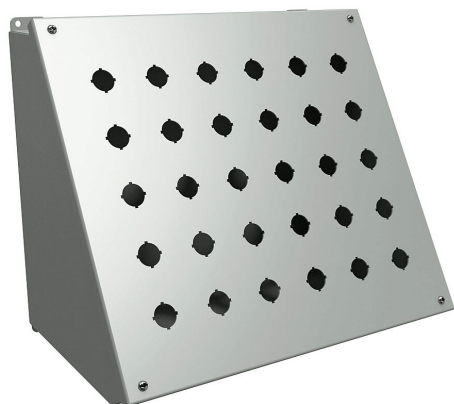


1490MK30 Cut Sheet



Hammond pushbutton console, 30 holes, 22mm, NEMA 12/13, 13 x 16 x 10in (HxWxD), desktop or pedestal mount, carbon steel, ANSI 61 gray, powder coat finish, hinged screw cover.

For complete product information, please see this item on our store at the following link:



<https://www.automationdirect.com/pn/1490MK30>

Technical Specifications

Brand	Hammond
Item	Pushbutton console
Number of Pushbutton Holes	30 holes
Pushbutton Hole Nominal Size	22mm
Slope Top	No
NEMA Rating	12/13
IP Rating	IP54
Nominal Enclosure Dimensions	13 x 16 x 10in (HxWxD)
Enclosure Height	12.63in
Enclosure Width	15.56in
Enclosure Depth	10.31in

Mounting	Desktop or pedestal
Integral Mounting Feet	Yes
Integral Mounting Flange	No
Dual Access	No
Knockouts	No
Material	Carbon steel
Color	ANSI 61 gray
Finish	Powder coat
Cover Type	Hinged screw cover
Hinge Type	Internal lift-off hinge
Number of Hinges Per Door	2
Additional Information	Purchase optional pedestal column separately

Agency Approvals

UL Listed File #	E65324
UL Recognized File #	None
UL Hazardous File #	None
CE	View CE declarations
CSA File #	LR21001
RoHS Status	Yes (See CE Doc)
EU REACH	View EU REACH document