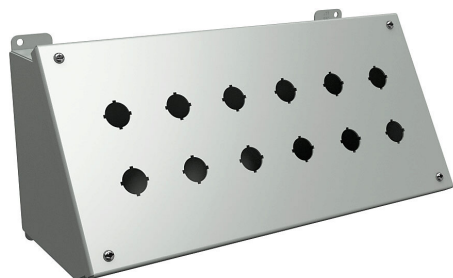


1490MG12 Cut Sheet



Hammond pushbutton console, 12 holes, 22mm, NEMA 12/13, 7 x 16 x 7in (HxWxD), desktop or pedestal mount, carbon steel, ANSI 61 gray, powder coat finish, hinged screw cover.

For complete product information, please see this item on our store at the following link:



<https://www.automationdirect.com/pn/1490MG12>

Technical Specifications

Brand	Hammond
Item	Pushbutton console
Number of Pushbutton Holes	12 holes
Pushbutton Hole Nominal Size	22mm
Slope Top	No
NEMA Rating	12/13
IP Rating	IP54
Nominal Enclosure Dimensions	7 x 16 x 7in (HxWxD)
Enclosure Height	6.78in
Enclosure Width	15.56in
Enclosure Depth	6.94in
Mounting	Desktop or pedestal

Integral Mounting Feet	Yes
Integral Mounting Flange	No
Dual Access	No
Knockouts	No
Material	Carbon steel
Color	ANSI 61 gray
Finish	Powder coat
Cover Type	Hinged screw cover
Hinge Type	Internal lift-off hinge
Number of Hinges Per Door	2
Padlockable	No
Keylocking	No
Additional Information	Purchase optional pedestal column separately

Agency Approvals

UL Listed File #	E65324
UL Recognized File #	None
UL Hazardous File #	None
CE	View CE declarations
CSA File #	LR21001
RoHS Status	Yes (See CE Doc)
EU REACH	View EU REACH document

Dimensional Drawings



2D Drawing PDF Link:
<https://cdn.automationdirect.com/static/drawings/1490MG12.pdf>
See store item page for other formats.