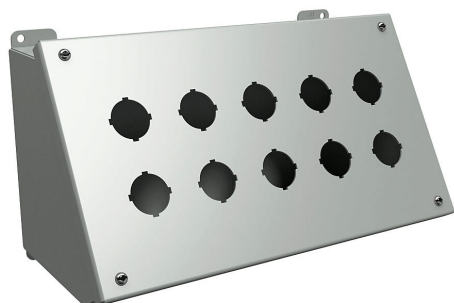


# 1490G10 Cut Sheet



Hammond pushbutton console, 10 holes, 30mm, NEMA 12/13, 7 x 13 x 7in (HxWxD), desktop or pedestal mount, carbon steel, ANSI 61 gray, powder coat finish, hinged screw cover.

For complete product information, please see this item on our store at the following link:



<https://www.automationdirect.com/pn/1490G10>

## Technical Specifications

<b>Brand</b>	Hammond
<b>Item</b>	Pushbutton console
<b>Number of Pushbutton Holes</b>	10 holes
<b>Pushbutton Hole Nominal Size</b>	30mm
<b>Slope Top</b>	No
<b>NEMA Rating</b>	12/13
<b>IP Rating</b>	IP54
<b>Nominal Enclosure Dimensions</b>	7 x 13 x 7in (HxWxD)
<b>Enclosure Height</b>	6.78in
<b>Enclosure Width</b>	13.31in
<b>Enclosure Depth</b>	6.94in
<b>Mounting</b>	Desktop or pedestal

<b>Integral Mounting Feet</b>	Yes
<b>Integral Mounting Flange</b>	No
<b>Dual Access</b>	No
<b>Knockouts</b>	No
<b>Material</b>	Carbon steel
<b>Color</b>	ANSI 61 gray
<b>Finish</b>	Powder coat
<b>Cover Type</b>	Hinged screw cover
<b>Hinge Type</b>	Internal lift-off hinge
<b>Number of Hinges Per Door</b>	2
<b>Padlockable</b>	No
<b>Keylocking</b>	No
<b>Additional Information</b>	Purchase optional pedestal column separately

## Agency Approvals

<b>UL Listed File #</b>	E65324
<b>UL Recognized File #</b>	None
<b>UL Hazardous File #</b>	None
<b>CE</b>	<a href="#">View CE declarations</a>
<b>CSA File #</b>	LR21001
<b>RoHS Status</b>	Yes (See CE Doc)
<b>EU REACH</b>	<a href="#">View EU REACH document</a>

## Dimensional Drawings



2D Drawing PDF Link:  
<https://cdn.automationdirect.com/static/drawings/1490G10.pdf>  
See store item page for other formats.