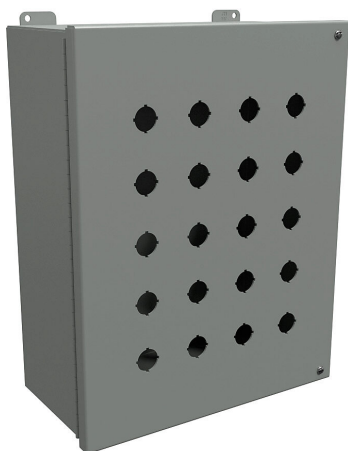


# 1489MP20 Cut Sheet



Hammond pushbutton enclosure, 20 holes, 22mm, NEMA 12, 15 x 12 x 6in (HxWxD), wall mount, carbon steel, ANSI 61 gray, powder coat finish, hinged screw cover.

For complete product information, please see this item on our store at the following link:



<https://www.automationdirect.com/pn/1489MP20>

## Technical Specifications

<b>Brand</b>	Hammond
<b>Item</b>	Pushbutton enclosure
<b>Number of Pushbutton Holes</b>	20 holes
<b>Pushbutton Hole Nominal Size</b>	22mm
<b>Slope Top</b>	No
<b>NEMA Rating</b>	12
<b>IP Rating</b>	IP54
<b>Nominal Enclosure Dimensions</b>	15 x 12 x 6in (HxWxD)
<b>Enclosure Height</b>	15.31in
<b>Enclosure Width</b>	12.06in
<b>Enclosure Depth</b>	6.17in
<b>Mounting</b>	Wall

<b>Integral Mounting Feet</b>	Yes
<b>Integral Mounting Flange</b>	No
<b>Dual Access</b>	No
<b>Knockouts</b>	No
<b>Material</b>	Carbon steel
<b>Color</b>	ANSI 61 gray
<b>Finish</b>	Powder coat
<b>Cover Type</b>	Hinged screw cover
<b>Hinge Type</b>	Continuous hinge
<b>Number of Hinges Per Door</b>	1
<b>Padlockable</b>	No
<b>Keylocking</b>	No
<b>Subpanel</b>	Subpanel included

## Agency Approvals

<b>UL Listed File #</b>	E65324
<b>UL Recognized File #</b>	None
<b>UL Hazardous File #</b>	None
<b>CE</b>	<a href="#">View CE declarations</a>
<b>CSA File #</b>	LR21001
<b>RoHS Status</b>	Yes (See CE Doc)
<b>EU REACH</b>	<a href="#">View EU REACH document</a>

## Dimensional Drawings



2D Drawing PDF Link:  
<https://cdn.automationdirect.com/static/drawings/1489MP20.pdf>  
See store item page for other formats.