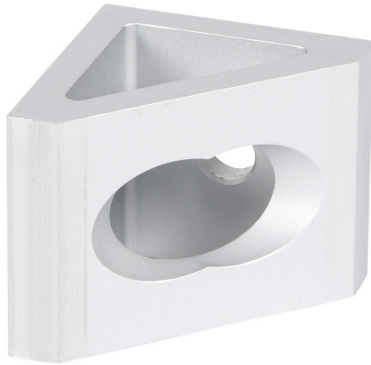


148912 Cut Sheet



FATH gusseted inside corner bracket, silver, 90-degree, 2 holes, anodized aluminum, slot size 10. For use with all 45mm and 90mm profile T-slotted rails. Manufacturer part number: 093W8421N10.

For complete product information, please see this item on our store at the following link:



<https://www.automationdirect.com/pn/148912>

Technical Specifications

Brand	FATH
Item	Gusseted inside corner bracket
Series	45 Series
Color	Silver
Angle	90-degree
Number Of Holes	2
Material	Anodized aluminum
Slot Size	10
For Use With	All 45mm and 90mm profile T-slotted rails
Manufacturer Part Number	093W8421N10

Agency Approvals

UL Listed File #	None
UL Recognized File #	None
UL Hazardous File #	None
CE	None
CSA File #	None
RoHS Status	Meets RoHS Chemical Restrictions - No CE (See RoHS Statement Below)
EU REACH	View EU REACH document
Other	RoHS Statement

Dimensional Drawings



2D Drawing PDF Link:
<https://cdn.automationdirect.com/static/drawings/148912.pdf>
See store item page for other formats.