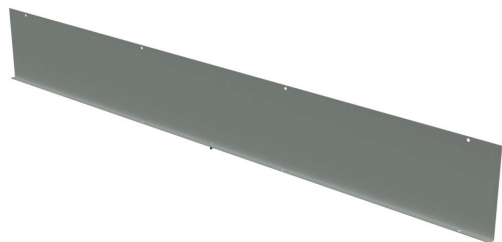


# 1487EB60 Cut Sheet



Hammond wireway fitting, partition, 8 x 8 x 60in, carbon steel, ANSI 61 gray, powder coat finish, NEMA 4/4X/12. For use with 1487SS series wireway.

For complete product information, please see this item on our store at the following link:



<https://www.automationdirect.com/pn/1487EB60>

## Technical Specifications

<b>Brand</b>	Hammond
<b>Item</b>	Wireway fitting
<b>Fitting Type</b>	Partition
<b>Size</b>	8 x 8 x 60in
<b>Material</b>	Carbon steel
<b>Color</b>	ANSI 61 gray
<b>Finish</b>	Powder coat
<b>Knockouts</b>	No
<b>NEMA Rating</b>	4/4X/12
<b>IP Rating</b>	IP66
<b>For Use With</b>	1487SS series wireway
<b>Additional Information</b>	Does not meet CSA or UL requirements

## Agency Approvals

<b>UL Listed File #</b>	E186830
<b>UL Recognized File #</b>	None
<b>UL Hazardous File #</b>	None
<b>CSA File #</b>	LL21312
<b>RoHS Status</b>	Meets RoHS Chemical Restrictions - No CE (See RoHS Statement Below)
<b>EU REACH</b>	<a href="#">View EU REACH document</a>
<b>Other</b>	<a href="#">RoHS Statement</a>

## Dimensional Drawings



2D Drawing PDF Link:  
<https://cdn.automationdirect.com/static/drawings/1487EB60.pdf>  
See store item page for other formats.