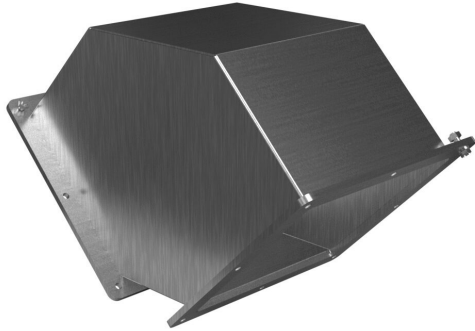


1487E9PSS Cut Sheet



Hammond pull-through wireway fitting, 90-degree elbow, 8 x 8in, 304 stainless steel, NEMA 4/4X/12.

For complete product information, please see this item on our store at the following link:



<https://www.automationdirect.com/pn/1487E9PSS>

Technical Specifications

Brand	Hammond
Item	Wireway fitting
Fitting Type	90-degree elbow
Wireway Type	Pull-through
Size	8 x 8in
Material	304 stainless steel
Finish	#4 brush
NEMA Rating	4/4X/12
IP Rating	IP66

Agency Approvals

UL Listed File #	E186830
UL Recognized File #	None
UL Hazardous File #	None
CSA File #	LL21312
RoHS Status	Meets RoHS Chemical Restrictions - No CE (See RoHS Statement Below)
EU REACH	View EU REACH document
Other	RoHS Statement