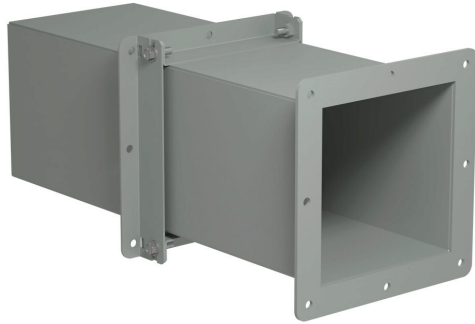


1487DX Cut Sheet



Hammond 1487 series pull-through wireway fitting, adjustable fitting, 6 x 6in, carbon steel, ANSI 61 gray, powder coat finish, NEMA 12. For use with 1487 series wireway.

For complete product information, please see this item on our store at the following link:



<https://www.automationdirect.com/pn/1487DX>

Technical Specifications

Brand	Hammond
Item	Wireway fitting
Fitting Type	Adjustable fitting
Wireway Type	Pull-through
Size	6 x 6in
Material	Carbon steel
Color	ANSI 61 gray
Finish	Powder coat
NEMA Rating	12
IP Rating	IP54
Includes	(1) gasket kit complete with hardware
For Use With	1487 series wireway

Agency Approvals

UL Listed File #	E186830
CSA File #	LL21312
RoHS Status	Yes (See CE Doc)
EU REACH	View EU REACH document
Other	RoHS Statement

Dimensional Drawings



2D Drawing PDF Link:
<https://cdn.automationdirect.com/static/drawings/2d/1487DX.pdf>
See store item page for other formats.