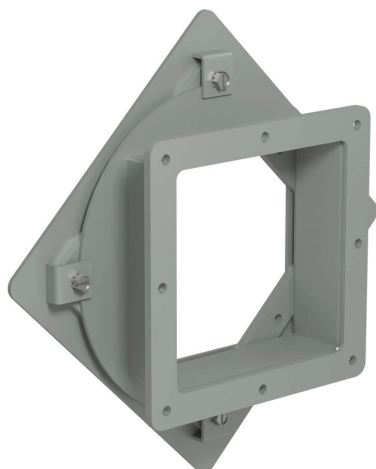


# 1487DV2 Cut Sheet



Hammond 1487 series pull-through wireway fitting, standard swivel nipple, 6 x 6in, carbon steel, ANSI 61 gray, powder coat finish, NEMA 12. For use with 1487 series wireway.

For complete product information, please see this item on our store at the following link:



<https://www.automationdirect.com/pn/1487DV2>

## Technical Specifications

<b>Brand</b>	Hammond
<b>Item</b>	Wireway fitting
<b>Fitting Type</b>	Standard swivel nipple
<b>Wireway Type</b>	Pull-through
<b>Size</b>	6 x 6in
<b>Material</b>	Carbon steel
<b>Color</b>	ANSI 61 gray
<b>Finish</b>	Powder coat
<b>NEMA Rating</b>	12
<b>IP Rating</b>	IP54
<b>Includes</b>	(1) gasket kit complete with hardware
<b>For Use With</b>	1487 series wireway

## Agency Approvals

<b>UL Listed File #</b>	E186830
<b>CSA File #</b>	LL21312
<b>RoHS Status</b>	Yes (See CE Doc)
<b>EU REACH</b>	<a href="#">View EU REACH document</a>
<b>Other</b>	<a href="#">RoHS Statement</a>

## Dimensional Drawings



2D Drawing PDF Link:  
<https://cdn.automationdirect.com/static/drawings/2d/1487DV2.pdf>  
See store item page for other formats.