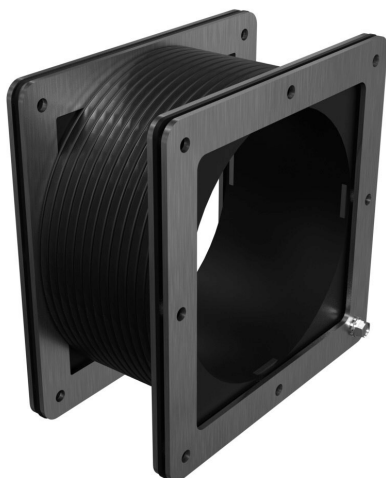


# 1487DFFSS Cut Sheet



Hammond pull-through wireway fitting, flexible fitting, 6 x 6in, Gortiflex™ bellows with 304 stainless steel flanges, #4 brush finish, NEMA 4/4X/12. For use with 1485 and 1487 series wireway.

For complete product information, please see this item on our store at the following link:



<https://www.automationdirect.com/pn/1487DFFSS>

## Technical Specifications

<b>Brand</b>	Hammond
<b>Item</b>	Wireway fitting
<b>Fitting Type</b>	Flexible fitting
<b>Wireway Type</b>	Pull-through
<b>Size</b>	6 x 6in
<b>Material</b>	Gortiflex™ bellows with 304 stainless steel flanges
<b>Finish</b>	#4 brush
<b>Knockouts</b>	No
<b>NEMA Rating</b>	4/4X/12
<b>IP Rating</b>	IP66
<b>For Use With</b>	1485 and 1487 series wireway

## Agency Approvals

<b>UL Listed File #</b>	E186830
<b>UL Recognized File #</b>	None
<b>UL Hazardous File #</b>	None
<b>CSA File #</b>	LL21312
<b>RoHS Status</b>	Meets RoHS Chemical Restrictions - No CE (See RoHS Statement Below)
<b>EU REACH</b>	<a href="#">View EU REACH document</a>
<b>Other</b>	<a href="#">RoHS Statement</a>

## Dimensional Drawings



2D Drawing PDF Link:  
<https://cdn.automationdirect.com/static/drawings/1487DFFSS.pdf>  
See store item page for other formats.