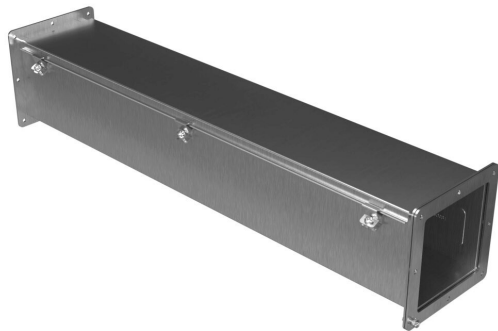


1487D36SS Cut Sheet



Hammond 1487SS series pull-through wireway, 6 x 6 x 36in, 304 stainless steel, #4 brush finish, screw clamps, NEMA 4/4X/12.

For complete product information, please see this item on our store at the following link:



<https://www.automationdirect.com/pn/1487D36SS>

Technical Specifications

Brand	Hammond
Item	Wireway
Wireway Type	Pull-through
Size	6 x 6 x 36in
Material	304 stainless steel
Finish	#4 brush
Cover Type	Hinged
Latch Type	Screw clamps
Knockouts	No
NEMA Rating	4/4X/12
IP Rating	IP66
Includes	(1) gasket kit complete with hardware

Agency Approvals

UL Listed File #	E186830
UL Recognized File #	None
UL Hazardous File #	None
CSA File #	LL21312
RoHS Status	Meets RoHS Chemical Restrictions - No CE (See RoHS Statement Below)
EU REACH	View EU REACH document
Other	RoHS Statement

Dimensional Drawings



2D Drawing PDF Link:
<https://cdn.automationdirect.com/static/drawings/1487D36SS.pdf>
See store item page for other formats.