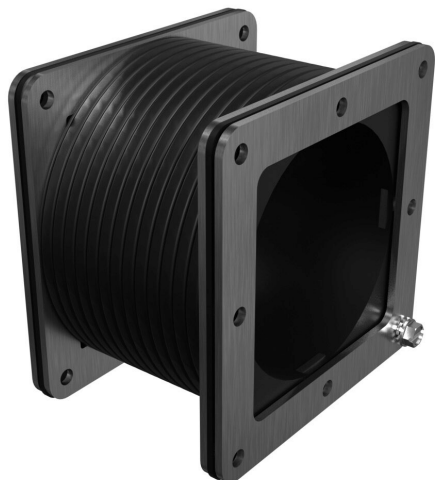


1487CFFSS Cut Sheet



Hammond pull-through wireway fitting, flexible fitting, 4 x 4in, Gortiflex™ bellows with 304 stainless steel flanges, #4 brush finish, NEMA 4/4X/12. For use with 1485 and 1487 series wireway.

For complete product information, please see this item on our store at the following link:



<https://www.automationdirect.com/pn/1487CFFSS>

Technical Specifications

Brand	Hammond
Item	Wireway fitting
Fitting Type	Flexible fitting
Wireway Type	Pull-through
Size	4 x 4in
Material	Gortiflex™ bellows with 304 stainless steel flanges
Finish	#4 brush
Knockouts	No
NEMA Rating	4/4X/12
IP Rating	IP66
For Use With	1485 and 1487 series wireway

Agency Approvals

UL Listed File #	E186830
UL Recognized File #	None
UL Hazardous File #	None
CSA File #	LL21312
RoHS Status	Meets RoHS Chemical Restrictions - No CE (See RoHS Statement Below)
EU REACH	View EU REACH document
Other	RoHS Statement

Dimensional Drawings



2D Drawing PDF Link:
<https://cdn.automationdirect.com/static/drawings/1487CFFSS.pdf>
See store item page for other formats.