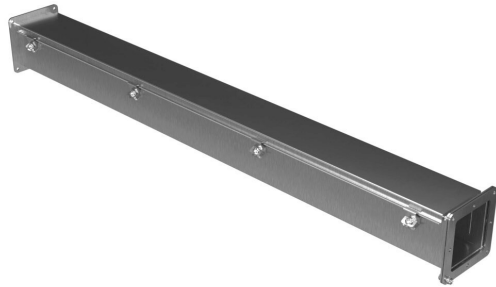


# 1487C48SS Cut Sheet



Hammond 1487SS series pull-through wireway, 4 x 4 x 48in, 304 stainless steel, #4 brush finish, screw clamps, NEMA 4/4X/12.

For complete product information, please see this item on our store at the following link:



<https://www.automationdirect.com/pn/1487C48SS>

## Technical Specifications

<b>Brand</b>	Hammond
<b>Item</b>	Wireway
<b>Wireway Type</b>	Pull-through
<b>Size</b>	4 x 4 x 48in
<b>Material</b>	304 stainless steel
<b>Finish</b>	#4 brush
<b>Cover Type</b>	Hinged
<b>Latch Type</b>	Screw clamps
<b>Knockouts</b>	No
<b>NEMA Rating</b>	4/4X/12
<b>IP Rating</b>	IP66
<b>Includes</b>	(1) gasket kit complete with hardware

## Agency Approvals

<b>UL Listed File #</b>	E186830
<b>UL Recognized File #</b>	None
<b>UL Hazardous File #</b>	None
<b>CSA File #</b>	LL21312
<b>RoHS Status</b>	Meets RoHS Chemical Restrictions - No CE (See RoHS Statement Below)
<b>EU REACH</b>	<a href="#">View EU REACH document</a>
<b>Other</b>	<a href="#">RoHS Statement</a>

## Dimensional Drawings



2D Drawing PDF Link:  
<https://cdn.automationdirect.com/static/drawings/1487C48SS.pdf>  
See store item page for other formats.