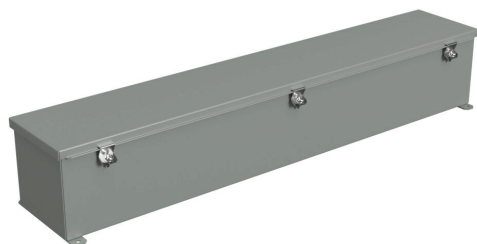


# 1486D36 Cut Sheet



Hammond wiring trough, 6 x 6 x 36in (HxDxL), NEMA 1/4/12, carbon steel, ANSI 61 gray, powder coat finish, single-door.

For complete product information, please see this item on our store at the following link:



<https://www.automationdirect.com/pn/1486D36>

## Technical Specifications

<b>Brand</b>	Hammond
<b>Item</b>	Wiring trough
<b>NEMA Rating</b>	1/4/12
<b>IP Rating</b>	IP54
<b>Nominal Enclosure Dimensions</b>	6 x 36 x 6in (HxWxD)
<b>Enclosure Height</b>	6.38in
<b>Enclosure Depth</b>	6.17in
<b>Enclosure Length</b>	36.38in

<b>Knockouts</b>	No
<b>Material</b>	Carbon steel
<b>Color</b>	ANSI 61 gray
<b>Finish</b>	Powder coat
<b>Cover Type</b>	Single-door
<b>Latch Type</b>	Screw clamps
<b>Padlockable</b>	No

## Agency Approvals

<b>UL Listed File #</b>	E186830
<b>UL Recognized File #</b>	None
<b>UL Hazardous File #</b>	None
<b>CSA File #</b>	LR21312
<b>RoHS Status</b>	Meets RoHS Chemical Restrictions - No CE (See RoHS Statement Below)
<b>EU REACH</b>	<a href="#">View EU REACH document</a>
<b>Other</b>	RoHS Statement

## Dimensional Drawings



2D Drawing PDF Link:  
<https://cdn.automationdirect.com/static/drawings/1486D36.pdf>  
See store item page for other formats.