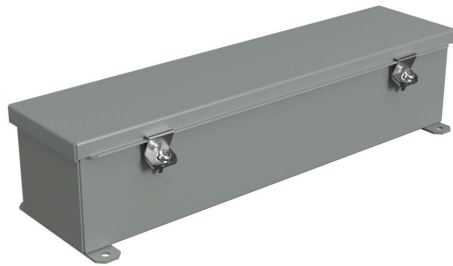


1486C18 Cut Sheet



Hammond wiring trough, 4 x 4 x 18in (HxDxL), NEMA 1/4/12, carbon steel, ANSI 61 gray, powder coat finish, single-door.

For complete product information, please see this item on our store at the following link:



<https://www.automationdirect.com/pn/1486C18>

Technical Specifications

Brand	Hammond
Item	Wiring trough
NEMA Rating	1/4/12
IP Rating	IP54
Nominal Enclosure Dimensions	4 x 18 x 4in (HxWxD)
Enclosure Height	4.38in
Enclosure Depth	4.17in
Enclosure Length	18.38in

Knockouts	No
Material	Carbon steel
Color	ANSI 61 gray
Finish	Powder coat
Cover Type	Single-door
Latch Type	Screw clamps
Padlockable	No

Agency Approvals

UL Listed File #	E186830
UL Recognized File #	None
UL Hazardous File #	None
CSA File #	LR21312
RoHS Status	Meets RoHS Chemical Restrictions - No CE (See RoHS Statement Below)
EU REACH	View EU REACH document
Other	RoHS Statement

Dimensional Drawings



2D Drawing PDF Link:
<https://cdn.automationdirect.com/static/drawings/1486C18.pdf>
See store item page for other formats.