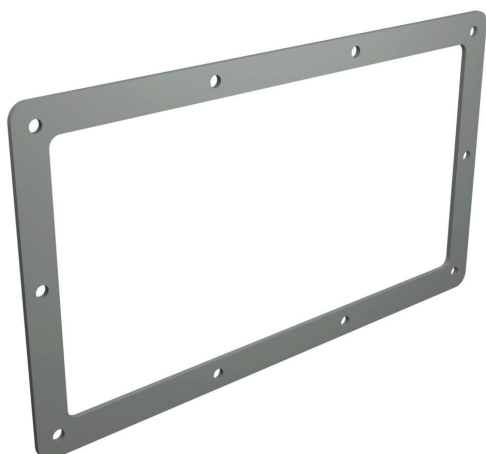


1485FK Cut Sheet



Hammond wireway fitting, box connector, 12 x 6in, carbon steel, ANSI 61 gray, powder coat finish, NEMA 12. For use with 1485 series wireway.

For complete product information, please see this item on our store at the following link:



<https://www.automationdirect.com/pn/1485FK>

Technical Specifications

Brand	Hammond
Item	Wireway fitting
Fitting Type	Box connector
Size	12 x 6in
Material	Carbon steel
Color	ANSI 61 gray
Finish	Powder coat
Knockouts	No
NEMA Rating	12
IP Rating	IP54
Includes	(1) angle sealing plate
For Use With	1485 series wireway

Agency Approvals

UL Listed File #	E186830
UL Recognized File #	None
UL Hazardous File #	None
CSA File #	LL21312
RoHS Status	Meets RoHS Chemical Restrictions - No CE (See RoHS Statement Below)
EU REACH	View EU REACH document
Other	RoHS Statement

Dimensional Drawings



2D Drawing PDF Link:
<https://cdn.automationdirect.com/static/drawings/1485FK.pdf>
See store item page for other formats.